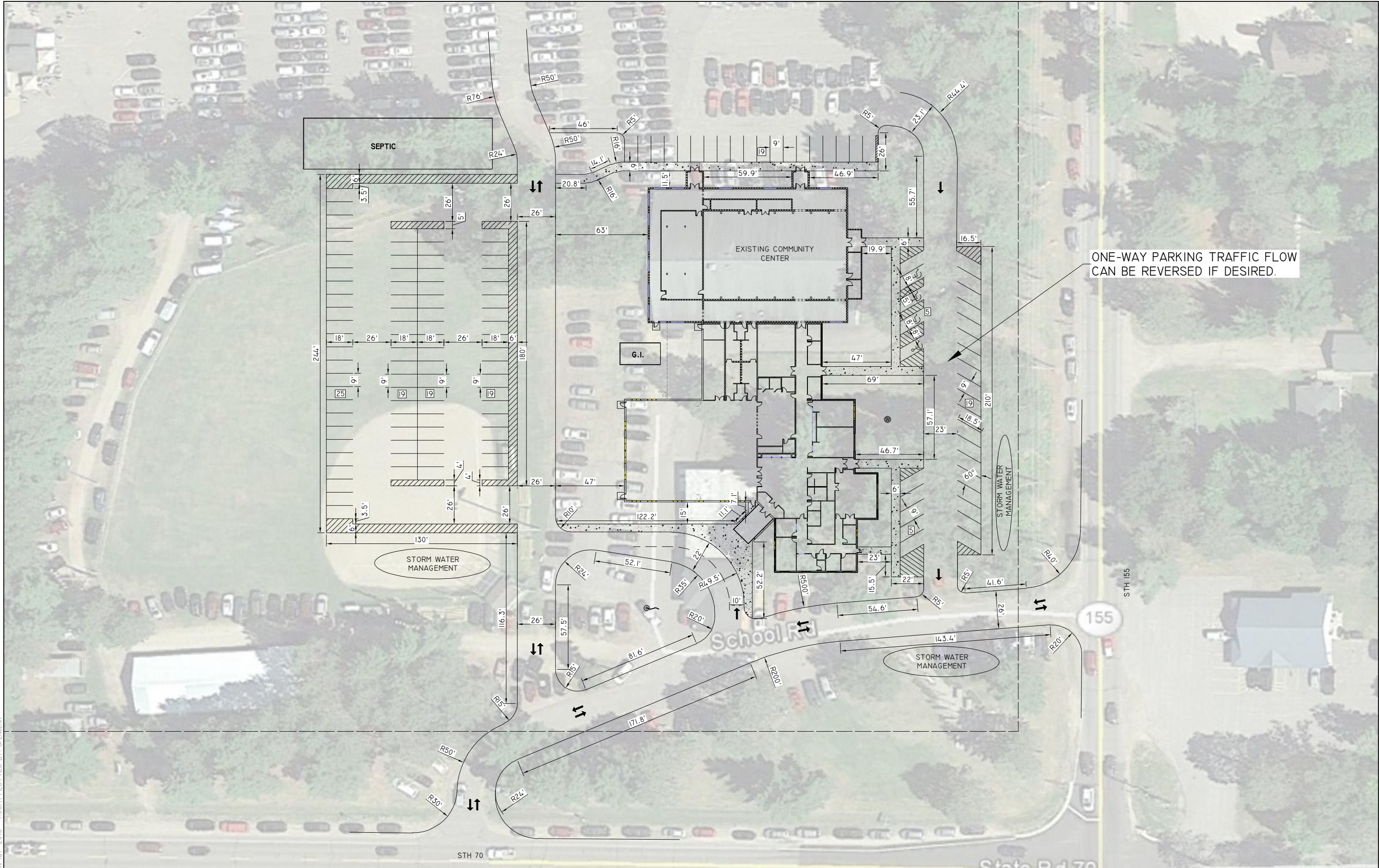


DRAWING FILE: P:\8000-8099\8016 - ST GERMAIN\DWG\EXHIBITS\8016-EXHIBIT-060718-ALT1.DWG LAYOUT: DESIGN
 PLOTTED: JUN 13, 2018 - 1:55PM PLOTTED BY: SPENGERH



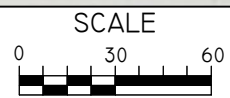
ONE-WAY PARKING TRAFFIC FLOW CAN BE REVERSED IF DESIRED.

REI Engineering, Inc.
 4080 N. 20TH AVENUE
 WAUSAU, WISCONSIN 54401
 PHONE: 715.675.9784, FAX: 715.675.4060
 EMAIL: MAIL@REIENGINEERING.COM



REI

**CIVIL & ENVIRONMENTAL
 ENGINEERING, SURVEYING**



DATE	REVISION	BY	CHK'D

DESIGNED BY:	CHECKED BY:
SURVEYED BY:	APPROVED BY:
DRAWN BY: STH	DATE:

ALTERNATE I
 ST GERMAIN - FACILITY SITE CONCEPT TASK #3
 TOWN HALL & COMMUNITY CENTER

REI
 REI No. 8016
 SHEET ALT PG# 1