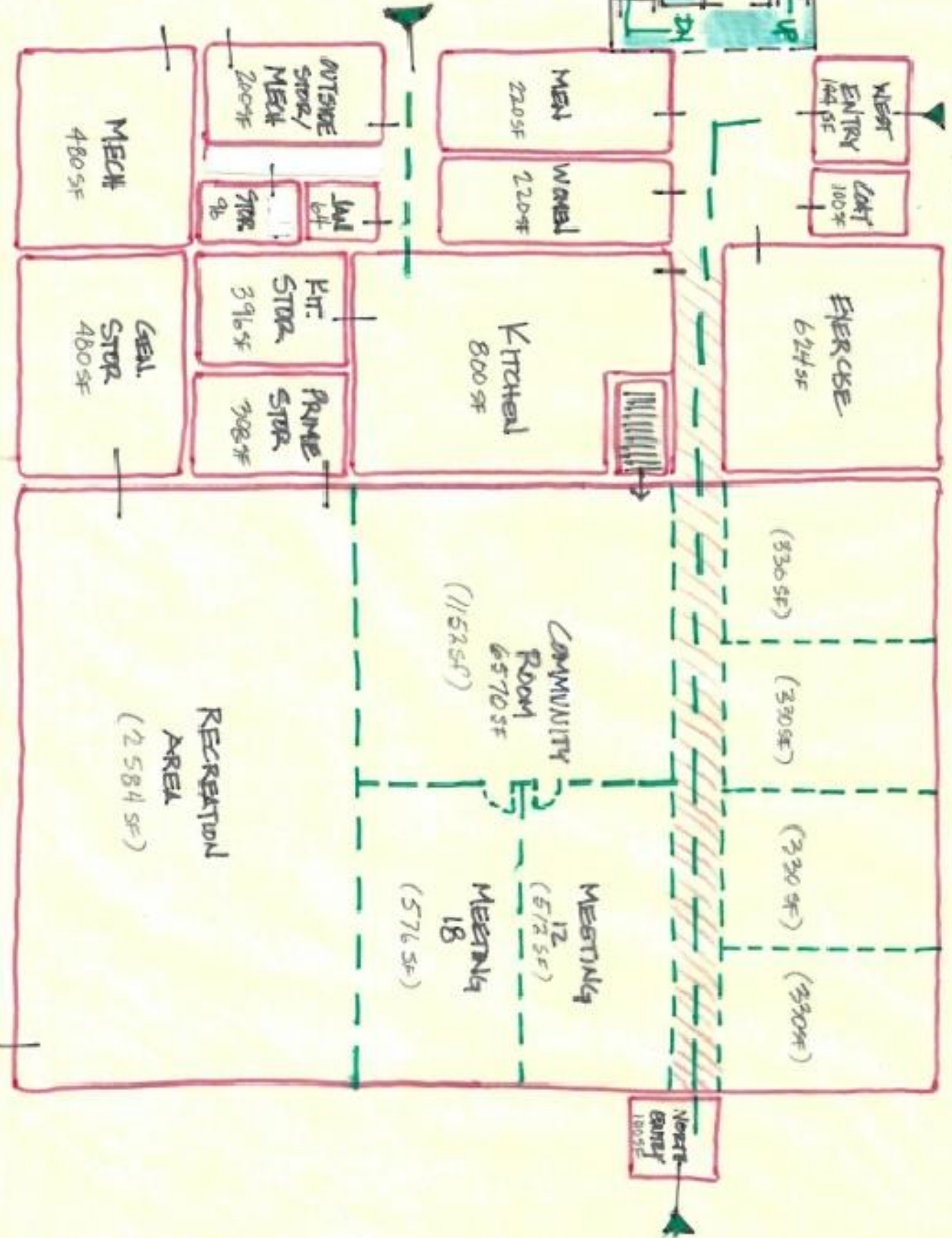
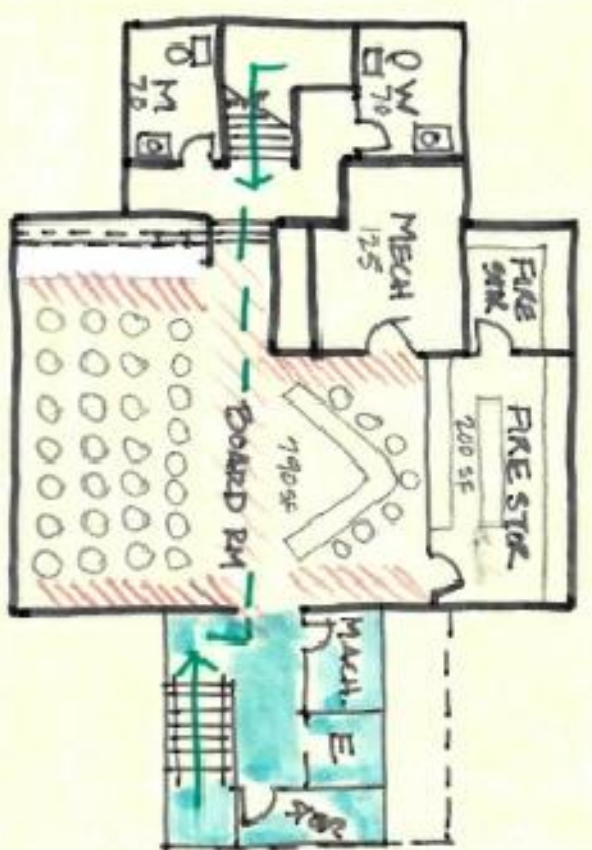
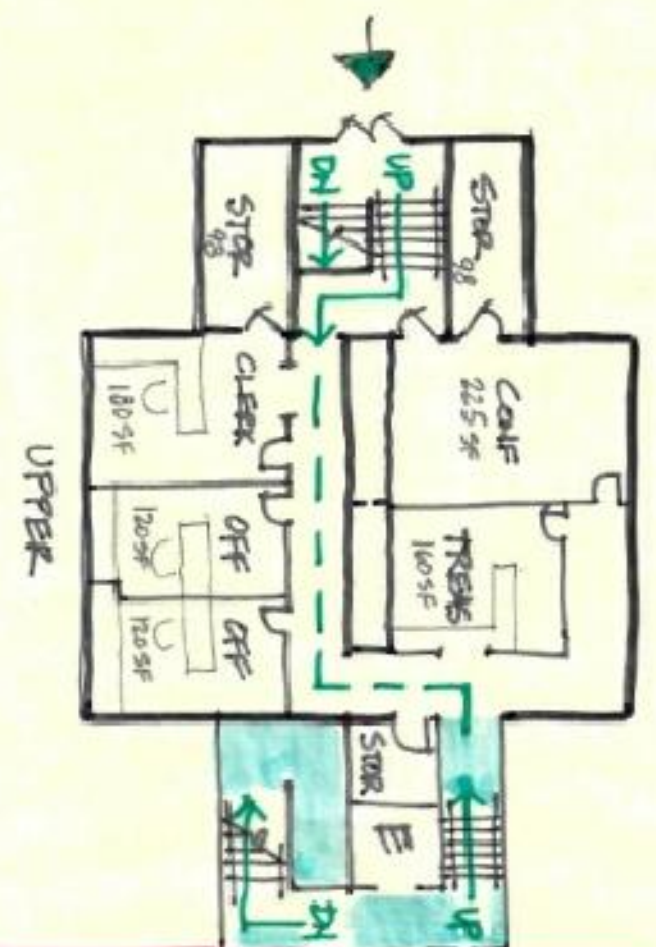


Town Hall  
 FUNCTIONS  
 3,906 SF

COMMUNITY  
 FUNCTIONS  
 13,100 SF w/LINK



**TOWN OF ST. GERMAIN**  
**POTENTIAL S.F. PROGRAM - OPTION 3**

Prepared By



Design Studio

18 OCTOBER 2017

207 Windtree Drive, Wausau, WI 54401 Cell: 715-571-8122  
 Cell: 920-379-7133  
 funktiondesignstudio.com

© 2017, Funktion Design Studio, LLC

SCALE: 1/16" = 1'-0"