



## Vilas County Highway Department

P.O. Box 1568 • 2104 N. Railroad St. (USH 45 N) • Eagle River, WI 54521

715-479-4641 • Fax: 715-479-9162 • [vchwy@vilascountywi.gov](mailto:vchwy@vilascountywi.gov) • [www.vilascountywi.gov](http://www.vilascountywi.gov)

---

February 5, 2024

## News Release

### Emergency Temporary Weight Restrictions

Pursuant to Section 349.16 Wisconsin State Statutes, the Vilas County Highway Department will be imposing temporary weight restrictions due to the unseasonably warm temperatures and forecasted rain on various County Trunk Highways effective, Wednesday February 7, 2024. Restrictions will begin at 12:00 P.M. Signs will be placed at various intersections informing the public that weight restrictions are in effect on that specific highway. Weight Limits will be removed once roads freeze, and conditions return to normal.

These weight restrictions are for County Trunk Highways only. Any weight restrictions on State, City, or Town roads are managed by each individual municipality. Special concessions on the county trunk highways may be made on a case-by-case basis through the issuance of a single or multiple trip permit.

The temporary weight restrictions for Vilas County highways are as follows:

**6 tons per axle, maximum 18 tons gross**

You may refer to the department's website [www.vilascountywi.gov](http://www.vilascountywi.gov) for details showing the restricted routes as well as permitting information or you may contact our office at 715-479-4641. These restrictions will remain in place until the highways have regained their strength and the frost has dissipated. Notices will be posted when the seasonal weight restrictions have been removed.

Thank you,

Troy Schalinske  
Highway Commissioner

Vilas County Highway Department  
Seasonal weight restrictions pursuant to State Statute  
349.16

**The following County roads will be posted at 6 tons per axle,  
with a maximum gross weight limitation of 18 tons:**

CTH A	All
CTH B	CTH W to CTH S
CTH C	All
CTH D	Industrial Park Road to CTH H
CTH E	All
CTH F	All
CTH G	Pincherry Game Trail to CTH N
CTH H	LDF Transfer Station to CTH K
CTH J	All
CTH K	CTH W to Marsh Road
CTH K	CTH M South to CTH E
CTH M	CTH K north of "triangle" to CTH B
CTH N	Hwy 51 to CTH M
CTH N	STH 155 to CTH K
CTH O	All
CTH P	All
CTH S	All

**The following County roads are open with NO LIMITS:**

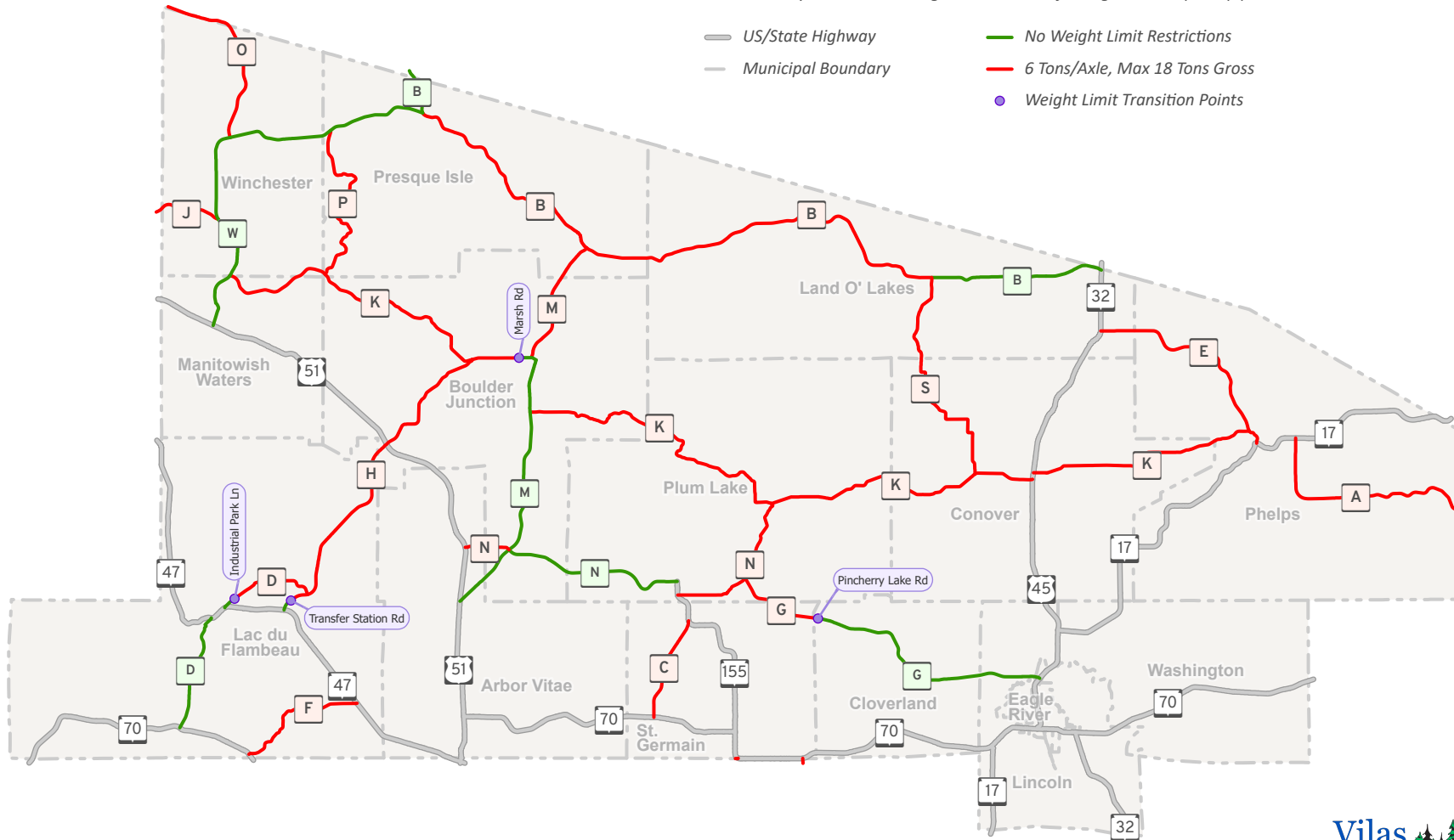
CTH B	CTH W to the Michigan State Line
CTH B	Hwy 45 to CTH S
CTH D	Hwy 70 to Hwy 47
CTH D	Hwy 47 to Industrial Park Road
CTH G	Hwy 45 to Pincherry Game Trail
CTH H	Hwy 47 to LDF Transfer Station
CTH K	CTH M North to Marsh Road including "triangle"
CTH M	Hwy 51 to Hwy K west including "triangle"
CTH N	CTH M to Hwy 155
CTH W	All

Permits are available on a case-by-case basis by contacting the office of the Vilas County Highway Commissioner or online at [www.vilascountywi.gov](http://www.vilascountywi.gov). Vilas County offers no blanket exemptions except those specifically referred to in State Statute.

# TEMPORARY VILAS COUNTY HIGHWAY WEIGHT RESTRICTIONS

- Restrictions will begin Wednesday, February 7, 2024 at 12:00 P.M.
- Signs will be placed at various intersections informing the public that weight restrictions are in effect on that specific highway.

- These weight restrictions are for County Trunk Highways only.
- Any weight restrictions on State, City, Village, or Town roads are managed by each individual municipality.
- Special concessions on the County Trunk Highways may be made on a case-by-case basis through the issuance of a single or multiple trip permit.



This map is provided courtesy of Vilas County and is to be used for reference purposes only. Vilas County makes every effort to produce and publish the most accurate and current information possible. No warranties, expressed or implied, are provided for the data provided, its use, or its interpretation. Vilas County does not guarantee the accuracy of the material contained herein and is not responsible for any misuse or misrepresentation of this information or its derivatives. This map does not represent a survey. Created: 3/13/2023 Path: P:\Custom\Departments\Highway\Highway.aprx

